



Strengthening the cultural identity of the Danube region

by building on common heritage of ART NOUVEAU

Art Nouveau Digital Catalogue

Methodology – Part II

Minute of the Second Expert Meeting

Contents

Terms and proposed definitions.....	2
Source	2
Resource.....	2
Record card	2
Attribute.....	2
Associated inventory to the record card	2
Digital Catalogue	2
1. INTRODUCTION	3
2. DEVELOPMENT OF THE ART NOUVEAU DIGITAL CATALOGUE	3
Step 5 – Record card for online resources and its extension with an inventory	3
Step 6 – Proposal for types of institutions which manage bibliographic resources related to Art Nouveau	4
Step 7 – Expert meeting (website interfaces, users guideline and accounts).....	5
3. CONCLUSIONS.....	9
ANNEX.....	10
Minute of the Second Expert Meeting.....	10
Record card template	14
Associated inventory to the record card	16

Terms and proposed definitions

To make sure that all the specialists of the project partners refer to the same concepts and that the terms are used with the same meaning, the following definitions were proposed.

Source – reference that provides information related to Art Nouveau.

Examples: books, albums, magazines, newspapers and journals, articles, scientific research published in articles or documents like methodologies, surveys, studies, archive sources like maps, plans, technical drawings, correspondence; exhibition catalogues, posters, photos etc.

Resource – a stock/ an array of various sources owned and made public by institutions on online database/ platforms/ websites.

Record card – a file made for each resource, where is mentioned the title of the online database/platforms, the link(s), the name of the owner institution or of the institution(s) that manage(s) the online database/ platforms, maximum 20 lines explaining what types of information it contains, language/ languages in which information is found, keywords to help potential users search, what are the conditions for accessing it (free database/ fee-based; digital printed).

Attribute – a field/ line of the record card template which is filled in by project partners/ specialists by introducing free text, choosing a value from dropdowns or multiple values from a list

Associated inventory to the record card – a digitized inventory (index) of a public library or archives or libraries or archives of institutions like: Universities, Museums, other institutions in the field of arts and heritage etc., which contains details (title, author etc.) of the non-digitized/ analogue sources

Digital Catalogue - a list of resources/databases related to Art Nouveau.

1. INTRODUCTION

The deliverable summarizes the project partners meeting regarding the development of the Art Nouveau Digital Catalogue [ANDC] and outlines the steps to define its content. It also includes information which highlights the methodological path and it presents the situations/obstacles and the identified solutions for the development of the ANDC.

The document will be read together with the “Methodology – Part I and Minute of the First Expert Meeting” (Step 1-4), in order to have an overall understanding of the ANDC development process.

2. DEVELOPMENT OF THE ART NOUVEAU DIGITAL CATALOGUE

Considering that the purpose of the ANDC is to function as a platform for research and that the target group is represented by the professional community researching Art Nouveau heritage, the catalogue is dedicated to **bibliographic (re)sources related to Art Nouveau**.

The ANDC contains only **online resources (websites and its details in dedicated record cards)**. As a solution for making public the non-digitized/analogue sources, an associated inventory will be developed.

Step 5 – Record card for online resources and its extension with an inventory

After the expert meeting in April 2022, the record cards were revised in order to use a common structure for the data insertion in of certain fields/attributes. With this occasion, the work package (template of the record card, template of the associated inventory, lists of keywords) was updated.

SITUATION / OBSTACLE	POSSIBLE SOLUTION
Random filling of the description field (attribute of the record card with free text)	In order to create a description that makes specific references to the bibliographic sources about the Art Nouveau movement, the guide for filling in this attribute of the record card will specify the obligation to mention the types of sources that can be found/consulted in the respective platform/database/website after searching for at least the keyword “Art Nouveau” or its synonyms in the national language.
Important sources available only in analogue format	For the accessibility of bibliographic sources that are not digitized or digitalized (for example those available in local archives or libraries that have not gone through the mentioned processes), inventories will be filled in. These inventories will be associated with the record card related to the institution/organization that manages the respective sources.

	<p>Two project partners (MAK & IMM) digitized and digitalized some sources related to the Art Nouveau which are currently in their archives/ repositories, creating thematic sections dedicated to them in their own online platforms. Thus, they have contributed to increasing the content of bibliographic sources available online to researchers and the general public. For this, they will not create inventories, because sources became available online.</p>
<p>Online database/platforms with no search engines or irrelevant search results</p>	<p>A series of online platforms/ databases contain information about bibliographic sources related to Art Nouveau, but do not have search engines. In this case, the project partners will fill in the inventory of the sources available on the respective website. Each position will have associated the link to view details about the resource contained in the inventory.</p>

The templates of the record card and of the associated inventory are available in Annex. The used keyword lists are those developed within the Partage Plus project, which had a section dedicated to this process through which thematically structured specialty terms were validated.

Step 6 – Proposal for types of institutions which manage bibliographic resources related to Art Nouveau

In order to expand the ANDC at the national level in the countries bordering Danube, the project partners will proceed in **screening and collecting the relevant digital or analogue sources** of information they are aware of.

The project activity coordinator proposed a list of possible institutions for which it is indicated to fill in the others record cards than partners already proposed:

1. National archives
2. County archives
3. Art Museums
4. National Institutes of Art History
5. Architecture / Urbanism / Art Universities
6. Union of Architects / Order of Architects / Chamber of Architects
7. National Library
8. Universities Libraries
9. Public administrations – City Hall archive, Platforms developed for tourism / route promotion
10. NGO – databases, public repository
11. Institution for Heritage protection / research / promotion

Furthermore, the ANDC will have a section dedicated to the European level, listing relevant websites in the ANDC framework, which represent results from cooperation projects on European level.

Step 7 – Expert meeting (website interfaces, users guideline and accounts)

The Art Nouveau Digital Catalogue is a website/ an online platform which brings together resources dedicated to this style and international movement of arts, architecture and applied arts, set between the end of 19th century and the beginning of the 20th century.

It presents a collection of Art Nouveau resources, arranged in a form of a catalogue, which sorts the present-day available online platforms/websites and relates to analogue bibliographic sources which contain information about Art Nouveau heritage not only in the Danube region, but also in the entire Europe. The aim of the catalogue is to identify, analyse and process (new) information related to Art Nouveau in the Danube region and beyond, to provide support for professionals in order to identify and access the relevant information.

Short overview on the achievement during the period April – October 2022

ANDC will have associated the link <https://artnouveaudigitalcatalogue.patrimoniu.ro/>, as a result of the consultation with the project partners. The link represents the choice of partners resulting from an online poll, where three variants were available.

The ANDC online platform consists in **two interfaces – one for partners/providers of record cards** and **one for visitors/large public**. For the expert meeting, the two interfaces are available in beta stage, meaning that the website is ready to use, in a state of testing and it can support small changes at the partners' proposals.

INP uploaded almost 40 record cards provided by project partners, with the associated inventories of sources (where applicable). The inventory of sources represents a solution for facilitating the access to the researchers to the bibliographical sources which are not available online. It is important to make public the existence of the analogue sources, so that researchers can be aware that a certain source can be consulted by visiting the institution in which the analogue source can be found.

The unitary format of the ANDC is defined:

1. by listing the resources by country and thereafter
2. by listing by type of institution which manages the present-day available resources (online platforms/websites with sources related to Art Nouveau).

INP presented the ANDC at the Conference of the International Council on Archives. The participation to this public event lead not only to the validation of the development methodology and the usefulness of the ANDC content for researchers, but also to the dissemination of the activity and of the entire project. The poster which was displayed and presented during the event can be downloaded for now from the website artnouveau.patrimoniu.ro.

Expert meeting purpose

The expert meeting focused on the presentation of the two interfaces – interface for partners/providers of record cards and interface for visitors/large public.

In order to have a better understanding of the architecture of interfaces (design and function), the first version of the Admin User Guideline and Online Visitor Guideline were presented, considering this as training for partners.

The aim of the expert meeting was to **consult the project partners regarding the functionality of the platform** (e.g. search engine, filters or types for list of keywords for the controlled vocabulary).

Admin User Guideline

The interface for providers of record cards (project partners or other specialists) **can only be accessed based on an approved account**. In order to create an account/ register/ log in as admin user, *Log In button* is available from: ■ first option - the Main Menu of <https://artnouveaudigitalcatalogue.patrimoni.ro/> and ■ second option - Footer Menu. Details about collected information for creating accounts were provided (access to the admin user interface will be granted upon confirmation).

The **interface for providers of record cards** supply access to the following pages:

1. add record card,
2. import record card,
3. publish record cards,
4. draft record cards,
5. vocabulary,
6. users (available only for administrator of the platform) and
7. log out.

One of the most important parts of the users interface is **adding record cards**, which can be done in **two ways: manually** and **automatically by uploading/importing**.

Each attribute of the record card was detailed, focusing on information which needs special attention (e.g. the set image button for logo; dropdown for type of resource; link for more sections of the online platform; gallery feature for description; institution that manages the website is, in general, different from the title of the resource; location of the institution – just city and country; multiple choice for language of website; dropdown menu for access of the source and free text for relevant information for researchers to access them; other documents consist in choosing from different types of sources and filling in the table manually or automatically).

During the process of adding record card, the save draft and preview button offer the user the possibility to save his work, even it is not finished, and to switch to the public interface. Save draft does not mean publish a record card. In order to make visible a record card on the platforms' interface for public, the Publish button should be hit. All the attributes of the record cards are mandatory to be filled in, in order to publish it. Export excels and print button offers the possibility to download the record card in the user's computer, as .xls or .pdf files.

The **import record card** page offers the possibility to **download the sample/template file** in .xls format for the record card and for the associated inventory of sources in order to be filled in. Then, this filled formats can **uploaded** in the ANDC platform.

Published record cards page list the record cards which are available on the platforms' interface for public. Any user can see only its own published cards. Each published record card can be edited or deleted, if needed.

Draft record card page list the record cards which are not finished or, after the filled in process, the publish button was not hit. Also, each published record card can be edited or deleted, if needed.

Vocabulary is the second important part of the users interface, with direct impact in the public interface, because the keywords helps the online visitor to find the sources that are important for his research. This page offers the possibility to:

- Create manually a thematic list, which can be viewed, exported, edited and deleted
- Upload a thematic list.

The lists of all languages can use keywords from: English, German, Hungarian, Slovak, Romanian, Serbian and Croatian.

New keywords can be inserted in any specific thematic list which already exists, by selecting the list and the type of keyword (English or in national language).

Not at least, the **search option on the data providers' interface** refers to the title of the resources, which facilitates the finding of a certain record card in order to edit it. This tool will become useful after the platform will gather more than 10 record cards per partner.

During the expert meeting, the following situations regarding the functionality of the platform were raised and possible solutions were proposed:

SITUATION / OBSTACLE	POSSIBLE SOLUTION
<p>New keywords which are not verified can be added to thematic lists (e.g.: In the art sector, there are so many words which are equal, but not exactly the same. This was the reason why during the Partage Plus project, it took so much time to generate the keyword lists – a lot of specialists discussed about every word and approved it.)</p>	<p>The lists generated from the Partage Plus project will be not editable. The other words can generate a separate list. This leads to two types of lists of keywords: editable (verified keywords) and non-editable (generated from search relevance and which can be improved).</p> <p>Eliminate plurals and derivate words.</p>
<p>Search engine – improvement of the lists of results</p>	<p>Regarding the functionality of the search engine and filters, partners had no observations.</p> <p>During discussion, it came out that it is important to introduce keywords which are relevant for the researchers, for example names of creators (architects, artists, etc.). This will also help to improve the list of results after a search and will raise the attractiveness for researchers. Partners agreed that introducing more names of creators in the keywords field of the record card will improve the usage of the platform,</p>

	becoming relevant for researchers. Therefore, partners will provide lists with the most important creators from their countries and for the new record cards will take this principle into account.
Public repository listed both for archive and library	In the record card, at type of institution attribute, the field for public repository will offer the possibility to come under two categories: public repositories resulted from libraries and public repositories resulted from archives.

Online Visitor Guideline

In order to access the visitor’s interface of the ANDC website, the online visitors do not need any account.

Navigating the menu, the online visitor will be able to:

- Read in the About page short information about ANDC
- Search all Art Nouveau Online Resource, by country, institution, title or keywords
- Access Project Partners description and website
- Download offered documentation in Deliverables section
- Access Art Nouveau and Art Nouveau 2 projects official online pages
- Contact the National Institute of Heritage for details about ANDC
- Log in the platform so that a specialist from the research field can provide data for the ANDC

The **home page** is the page dedicated to the countries specific resources (record cards listed by countries) and to the search option (**Art Nouveau Online Resources**). After accessing the page dedicated to a country, all the particular resources are listed in order to be viewed (the online visitor cannot edit or add anything on the website, just view and print).

There are two search options, recognizable by the eyeglass sign:

- one option is the big line on the middle of the screen, available only on this page
- other option in the magnifying glass sign on the header, available on all the pages.

The both options functions in the same way.

The online visitors can type up to 3 words. The result of the search consists in listing the resources which contain the typed keywords. A better targeted result can be obtained if taggle filter options: Search in, Sort By and Direction buttons to filter the results.

The **About** page offers short information about ANDC and it is linked with the Art Nouveau Online Resources page.

On the page **Partners**, user will find the full list of the project partners involved in the development of the ANDC and the description of each partner (National Institute of Heritage, Bucharest, Romania - INP; Museum of Applied Arts, Budapest, Hungary - IMM; Museum of Applied Arts, Vienna, Austria - MAK; Museum of Arts and Crafts, Zagreb, Croatia - MUO; Slovak University of Technology in Bratislava, Slovakia - STUBA; Republican Institute for the Protection of Cultural Monuments, Belgrade, Serbia - RIPCM; Réseau Art Nouveau Network, Brussels, Belgium). By hitting the Read more button, more information will be added.

On the page **Deliverables**, the minutes of the expert meeting, highlighting also the steps and process of the ANDC development, are available for viewing and downloading as .pdf.

The **Art Nouveau** and **Art Nouveau 2** project lines from the main menu opens the official online pages (Interreg pages) of the projects.

The **Contact** page offers details for the large public so that a person can contact through email directly the department and the team which developed the ANDC.

The **Log in** section of the platform is dedicated only for internal use of the project partners or researches. Regular visitors of the Art Nouveau Digital Catalogue have no access.

During the expert meeting, the following situation was raised and possible solutions were proposed:

SITUATION / OBSTACLE	POSSIBLE SOLUTION
Avoid the restriction of the platform access to the general public	<p>The online visitors/large public do not need to create an account to view the record cards and other pages available on the ANDC website. Cookies will gather necessary information.</p> <p>Restrictions are foreseen only for the data providers interface, where are two types of users are approved through accounts:</p> <ol style="list-style-type: none"> 1. representatives of projects partners and of other possible research institutions – can operate only the record cards which they have created 2. administrator – the developer of the online platform, which can manage all record cards and accounts

3. CONCLUSIONS

The Art Nouveau Digital Catalogue [ANDC], available as an online platform (<https://artnouveaudigitalcatalogue.patrimoni.ro/>), represents the optimal solution for accessing it by researchers and specialists, which can also be populated with new data even after the end of the project, thus having the sustainability component integrated.

To disseminate this platform, the project partners will distribute the link using different methods, such as: email to the contacts from their professional network; post the AN digital catalogue link on the news subpage of their official website; include it on a post on social media official channels or newsletter; post of the AN digital catalogue link, with a short description, on the institution's website.

ANNEX

Minute of the Second Expert Meeting

SECOND EXPERT MEETING – October 20-21, 2022

Hybrid - Organized in person at INP in Bucharest, Romania and via zoom

The meeting was organized in Bucharest, at the National Institute of Heritage (INP), on October 20-21, 2022, but was also accessible via the zoom platform for the partners that couldn't manage to attend physically. Partners from INP, MUO, STUBA, RIPCM, IMM and MAK were represented – see the above presence sheet.

The expert meeting focused on the presentation of the two interfaces – interface for partners/providers of record cards and interface for visitors/large public.

In order to have a better understanding of the architecture of interfaces (design and function), the first version of the Admin User Guideline and Online Visitor Guideline were presented, considering this as training for partners.

The aim of the expert meeting was to consult the project partners regarding the functionality of the platform (e.g. search engine, filters or types for list of keywords for the controlled vocabulary).

Day 1 – October 20, 2022

→ Welcoming the participants

The coordinator of the project from INP welcomed the participants and quickly presented the necessity and the goals of the meeting, as well as the relevance of this deliverable for the Art Nouveau heritage in general.

→ Art Nouveau Digital Catalogue [ANDC]

The coordinating partner (INP) briefly described the activity and the progress achieved since the SCOM meeting in Budapest:

- Contract for the development of the website dedicated to the Art Nouveau Digital Catalogue
- ANDC associated the link www.artnouveaudigitalcatalogue.patrimoniu.ro, as a result of the consultation with the project partners. The link represents the choice of partners resulting from an online poll, where three variants were available.
- Work progress on the website: interface for partners, interface for visitors. For the expert meeting, the two interfaces are available in beta stage, meaning that the website is ready.
- INP uploaded almost 40 record cards provided by project partners, with the associated inventories of sources (where applicable). The inventory of sources represents a solution for facilitating the access to the researchers to the bibliographical sources which are not available online. It is important to make public the existence of the analogue sources, so that researchers can be aware that a certain source can be consulted by visiting the institution in which the analogue source can be found.
- Promotion and dissemination of the project and the Digital Catalogue through the participation of the 2022 Conference of the International Council on Archives in Rome.

- Art Nouveau Digital Catalogue – interface for providers of record cards
The coordinating partner (INP) together with the contracted collaborator presented the ANDC interface for the data providers and the functionality of its interface: usage methods for uploading information, editing, publishing, exporting, etc.
The presentation was followed by a test of page dedicated to resources (search/filters) and a Q&A session. Every partner had the chance to propose and discuss relevant changes, in order to adjust and better the interface in accordance with the needs of its users.
Some of the situations regarding the functionality of the platform that were raised concerned the search engine (improvement of the lists of results), possibility of new keywords and the listing of the public repository both for archive and library.
- Art Nouveau Digital Catalogue – public interface
The coordinating partner (INP) together with the contracted collaborator presented the interface for visitors/public, the functionality of the interface and the structure of the online platform. The presentation focused on the interface structure, which is based on topics and was developed on a unitary format and how the wider audience will use its content.
The presentation of the ANDC public interface was followed by an interactive discussion, where partners shared questions, observations and change proposals. One of the main aspects discussed concerned the possibility of the restriction of the platform access to the general public.
- Status of achieving the proposed target for record cards.
The coordinating partner (INP) presented the progress report of each partner regarding the proposed record cards target:
- number of record cards after the 1st fill in by partner
 - number of record cards after feedback from INP
 - number of record cards with integrated feedback from INP
 - number of record cards sent by partner by October 19th
 - number of record cards/country uploaded in the platform.
- The coordinating partner (INP) presented the progress of the proposed record cards for the Art Nouveau Online Sources in Europe.
- Next steps for the ANDC development.
The partners agreed that until October 2022 everybody should fill in at least 10 record cards with various resources of digital and analog sources related with Art Nouveau. INP presented some suggestions of possible institutions for which record cards could be filled in, like national archives, county archives, art museums, national institutes of art or art history, architecture/urbanism universities, national and university libraries, NGOs databases etc.
Also, in order to disseminate the platform, it was established that each of the project partners will distribute the link using different methods, such as: email to the contacts from their professional network; post the AN digital catalogue link on the news subpage of their official website; include it on a post on social media official channels or newsletter; post of the AN digital catalogue link, with a short description, on the institution's website.

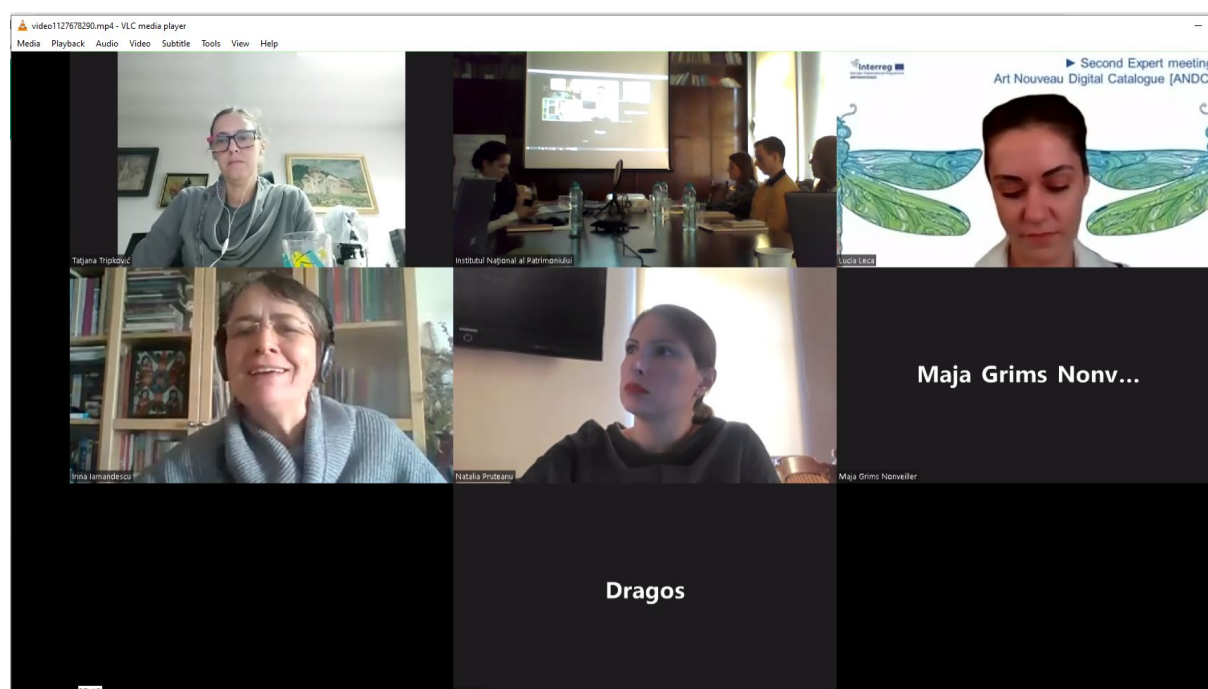
Day 2 – October 21, 2022

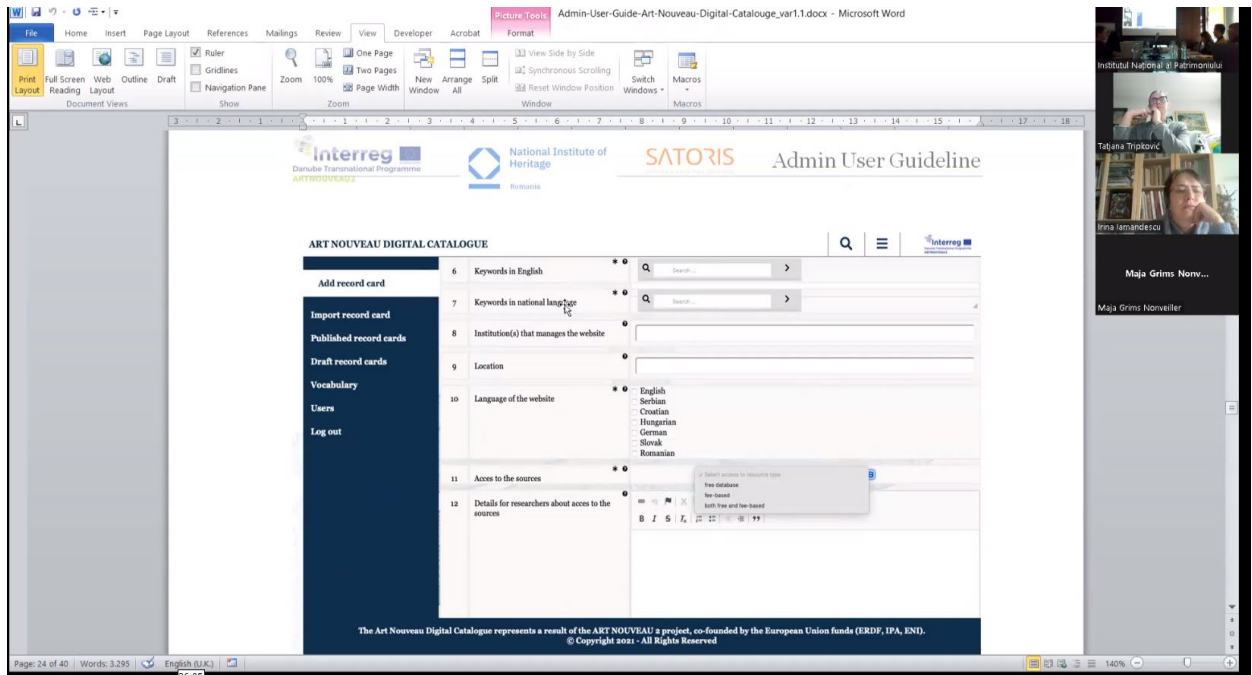
On the second day of the expert meeting, the coordinating partner organized an offline program in connection with the Art Nouveau Digital Catalogue activity for the partners that had attended the meeting in person in Bucharest.

The representatives from INP, together with the participants from MAK and STUBA visited two of the most emblematic Art Nouveau buildings in Bucharest, home of some relevant artifacts, archives and resources: Filipescu Cesianu Villa (hosting today the Museum of Ages) and Frederic Storck and Cecilia Cuțescu Storck Museum.

List of participants:

Name	Institution	Country	Presence
Lucia Leca	National Institute of Heritage	Romania	In person
Ana Chiricuță	National Institute of Heritage		In person
Florentina Murea-Matache	National Institute of Heritage		In person
Simina Stan	National Institute of Heritage		In person
Irina Iamandescu	National Institute of Heritage		Via zoom
Irina Dobriță	National Institute of Heritage		Via zoom
Natalia Pruteanu	Satoris		In person
Dragoș Cioran	Satoris		In person
Maja Grims Nonveiller	Museum of Arts and Crafts	Croatia	Via zoom
Kathrin Pokorny-Nagel	MAK - Austrian Museum of Applied Arts	Austria	In person
Livia Bulikova	Slovak University of Technology in Bratislava	Slovakia	In person
Matus Kiacek	Slovak University of Technology in Bratislava		In person
Tatjana Tripković	Republic Institute for Protection of Cultural Monuments	Serbia	Via zoom
Vladimir Dzamic	Republic Institute for Protection of Cultural Monuments		Via zoom
Anna Bognar	Museum of Applied Arts	Hungary	Via zoom
Sztankovics Sarolta	Museum of Applied Arts		Via zoom





Record card template

Attributes of the record card:		Fields to be filled:	Explanation / pop-out:
1	Title *		Official name of the website / online platform
2	Image *		Insert logo of the website or logo of the institution that manages the website
3	Type of resource / institution *		Public library / Public archive / Museum library / Museum archive / Institute library / Institute archive / University library / University archive / Organisation archive / Public repository
4	Link *		www. ... / http ... (direct link to the library/archive/collection website, not to the institution website; here can be listed more than one link)
5	Description *		Minimum 150 words summary (minimum 1000 characters - maximum 10.000 characters) A short general description of the resource (library / archive): - short description of the institution related to the context of sources or/and Art Nouveau (if needed); - what is to be found - types of sources, types of art/domain, object types etc. <u>The types of sources and short content description will be elaborated in relation with Art Nouveau sources.</u>
6	Keywords in English *		Min. 20 keywords related to Art Nouveau and are relevant for a researcher that will use the provided link (keywords categories are defined in the document <i>3_Appendix_Key words_categories.doc</i>)
7	Keywords in national language *		Filled in the same order in which keywords in English were provided.
8	Institution(s) that manages the website		Name of the institution(s)
9	Location		City, Country

10	Language of the website *	
11	Acces to the sources *	
12	Details for researchers about acces to the sources	
13	Other documents	

* mandatory fields to be completed

English / Serbian / Croatian / Hungarian / German / Slovak / Romanian

Please chose between: free database/ fee-based/ both free and fee-based/ see each source detailed (it will be a dropdown field)

Usefull details for researchers about consulting the sources (adress and program of the library/ posibility to request digital format through email etc.)

For the websites that do not have a search engine, it is neccessary to make a list/table (.xl format) with the sources related to Art Nouveau. The standard format of the list/table is the file named *2_Other documents_List related to record card for online resources (website).xl*.

For the websites that have a search engine, please do not fill this cell.

Associated inventory to the record card

Other documents to be uploaded in row 13 of the Record card for ONLINE RESOURCES (website)

- * On row 13, `Other documents` refer to a list of items generated in the following cases:
 1. for website that do not have a search engine (e.g.: catalogues published by a museum on it's own website, which are not easy to find)
 2. for website that do not have a search engine and contain not only sources related to Art Nouveau artistic movement, but also general bibliography (e.g.: library with a lot of sources which cannot be filtered) or general research sources (eg: public archive with file inventories)
- * For the websites which generate lists through their own search engines for the listed keywords, it is not necessary to upload .xl / .PDF list associated to the record card in row 13 `Other documents`.
- * Please fill the `Key words` and `Link` columns for all cases in which you have available information. In exceptional cases, for list of analogue sources, you can fill in only the `Title`, `Author(s)` and `Details` columns.
- * Please choose one or more sections from the following: books/catalogues, periodicals, articles, photographs/drawings/illustrations, archive documents, other digital sources.

BOOKS / CATALOGUES

Nr. Cr.	Title	Author(s) / Editor / Coordinator etc.	Details (Publishing, Year)	Key words (minimum 5 key words)	Link (direct link to the platform were the source was published / detailed – if existing)
1	...				
2	...				
...	...				

PERIODICALS / MAGAZINES

Nr. Cr.	Title	Publisher	Details (Volume/ number, year)	Key words (minimum 5 key words)	Link (direct link to the platform were the source was published / detailed – if existing)
1	...				
2	...				
...	...				

ARTICLES						
Nr. Crt.	Title	Author(s)	Details (Name of the periodical, volume/number, year)	Key words (minimum 5 key words)	Link (direct link to the platform were the source was published / detailed – if existing)	
1	...					
2	...					
...	...					
PHOTOGRAPHS / DRAWINGS / ILLUSTRATIONS						
Nr. Crt.	Title (description of item)	Author(s), type of author (photographer / designer / architect / graphician / topographer etc.)	Details (Type of source: photo / poster / illustration / drawing / map / plan etc.; Year)	Key words (minimum 5 key words)	Link (direct link to the platform were the source was published / detailed – if existing)	
1	...					
2	...					
...	...					
ARCHIVE DOCUMENTS						
Nr. Crt.	Title (description of item)	Archive institution, Fond name, File/filing unit	Details (Type of document: manuscript, map, plan, drawing etc., Year)	Key words (minimum 5 key words)	Link (direct link to the platform were the source was published / detailed – if existing)	
1	...					
2	...					
...	...					

OTHER SOURCES					
Nr. Crt.	Title (name of building)	Author(s) of the building, type of author (architect / engineer / topographer etc.)	Details (Type of information: text description, photo, technical drawings etc.)	Key words (minimum 5 key words)	Link (direct link to the platform where the source was published / detailed – if existing)
1	...				
2	...				
...					
Nr. Crt.	Title (name of museum object / artefact)	Author(s) of the artefact, type of author (artist / designer / photographer / graphician / manufacturer etc.)	Details (Type of information: text description, photo, technical drawings etc.)	Key words (minimum 5 key words)	Link (direct link to the platform where the source was published / detailed – if existing)
1	...				
2	...				
...					